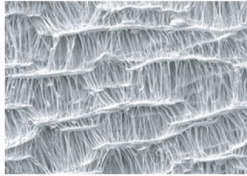




## PureForm<sup>™</sup> ePTFE Facial Implants

### Controlled Tissue Integration (CTI Technology)



(x500) 20–40 micron IND

Aside from being inert and biocompatible, ePTFE can be configured to provide varied amounts of tissue integration. PureForm Facial Implants are designed to provide controlled tissue integration (CTI) for the purpose of stabilizing our implants. The micro-structure of the implant

surface is optimized to facilitate soft tissue in-growth while ensuring that the implant can be easily explanted with blunt dissection. CTI design minimizes the formation of a fibrotic capsule, providing a consistent and predictable surgical outcome, as well as a high level of patient satisfaction.

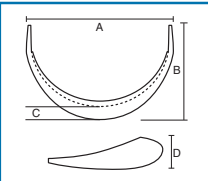
The 3-D PureForm Facial Implants are formed from expanded Polytetrafluoroethylene (ePTFE) and are indicated for augmentation or repair of the soft tissues of the face and neck. CTI Technology makes the PureForm implants the gold standard of permanent facial augmentation offering several advantages over traditional silicone implants and delivering greater patient satisfaction. PureForm Implants are offered in various nasal, chin, malar, and para-nasal configurations to meet all of your facial augmentation needs.

### Ideal Facial Implant

### PureForm

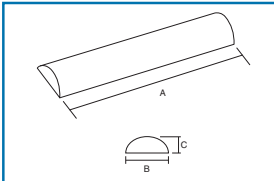
100% ePTFE, not coated. Carve without removing the ePTFE layer as compared to the competition	✓
Micro-porous CTI Technology promotes tissue in-growth, reducing migration, erosion, and scarring as compared to silicone implants	✓
Pre-formed 3-D shapes (chins, nasal, malar, and para-nasal) in multiple sizes	✓
Predictable augmentation with reduced tissue response and as compared to silicone implants	✓
Easily explanted with blunt dissection	✓
Provided sterile	✓
Easily carved for a custom fit	✓

### CHIN IMPLANTS



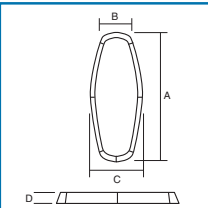
Item Code	Dim A (mm)	Dim B (mm)	Dim C (mm)	Dim D (mm)
1EC01	52.9	38.1	7.7	13.5
1EC02	59.3	42.9	8.2	14.8
1EC03	66.0	47.4	9.5	16.9

### ROUND TOP DORSUM BLANK



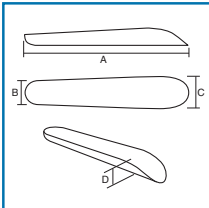
Item Code	Dim A (mm)	Dim B (mm)	Dim C (mm)
4NDSR	49.5	10.0	4.0
5NDSR	49.5	10.0	5.0
6NDSR	49.5	10.0	6.0

### ROUNDED NASAL DORSUM IMPLANTS



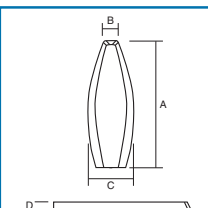
Item Code	Dim A (mm)	Dim B (mm)	Dim C (mm)	Dim D (mm)
2NDR01	37.4	9.6	13.0	2.2
2NDR02	49.0	12.7	17.2	2.2
3NDR01	37.4	10.0	15.7	3.2
3NDR02	49.0	12.7	20.0	3.2

### ASIAN STRAIGHT NASAL DORSUM



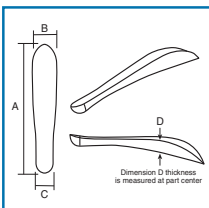
Item Code	Dim A (mm)	Dim B (mm)	Dim C (mm)	Dim D (mm)
4AND03	50.0	7.5	9.5	4.0
4AND04	50.0	8.0	10.0	4.0
5AND02	50.0	7.5	9.5	5.0
6AND02	50.0	8.0	10.0	6.0

### POINTED NASAL DORSUM IMPLANTS



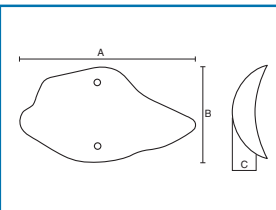
Item Code	Dim A (mm)	Dim B (mm)	Dim C (mm)	Dim D (mm)
2NDP01	37.5	3.6	12.4	2.2
2NDP02	49.1	4.7	16.5	2.2
3NDP01	37.3	3.5	15.0	3.2
3NDP02	49.0	5.4	19.3	3.2

### ASIAN CURVED NASAL DORSUM



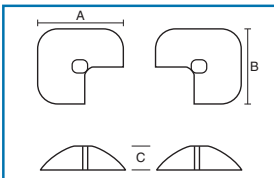
Item Code	Dim A (mm)	Dim B (mm)	Dim C (mm)	Dim D (mm)
4AND01	50.0	9.5	7.5	4.0
4AND02	50.0	10.0	8.0	4.0
5AND01	50.0	9.5	7.5	5.0
6AND01	50.0	10.0	8.0	6.0

### MALAR IMPLANTS (RIGHT AND LEFT)



Item Code	Dim A (mm)	Dim B (mm)	Dim C (mm)
1ML01	35.0	18.0	3.5
1ML02	45.4	23.0	5.0
1ML03	49.4	24.0	5.7
1ML04	55.0	27.1	5.8

### ASIAN PARA-NASAL



Item Code	Dim A (mm)	Dim B (mm)	Dim C (mm)
4PN01	20.0	18.0	4.0
5PN01	20.0	18.0	5.0
6PN01	21.0	19.0	6.0

\* Gore-Tex is a trademark of W.L. Gore and Associates